

THE
BARRETO

MODEL 3107C

7" WOOD CHIPPER OWNER'S MANUAL

CONGRATULATIONS!

You are now the proud owner of the BARRETO 3107 Chipper. The OPERATOR'S MANUAL is attached to the machine. Please study it and this manual to become familiar with the 3107C, its characteristics, and method of operation. Pay particular attention to the safety and operating instructions to prevent personal injury or equipment damage.

If you have any questions or need any replacement parts in the future, please contact us at your convenience. Our toll-free phone number, fax and email are listed below.

THANK YOU for your patronage and confidence in BARRETO equipment.

Barreto Manufacturing, Inc.
Innovative Equipment Engineered to Last
66498 Hwy 203, La Grande, OR 97850
(800) 525-7348 (541) 963-7348
FAX (541) 963-6755
E-Mail: info@barretomfg.com
Web Site: <http://www.barretomfg.com>

Machine Identification Record

Machine model number _____

Machine serial number _____

Engine manufacturer _____

Engine model number _____

Engine serial number _____

TABLE OF CONTENTS

TABLE OF CONTENTS	2
WARRANTY OF BARRETO MANUFACTURING EQUIPMENT	2
SAFETY MESSAGES	3
3107C ASSEMBLY INSTRUCTIONS	4
3107C INTENDED USE.....	4
OPERATOR TRAINING.....	5
ROUTINE MAINTENANCE	5
MAINTENANCE PREPARATION	6
LOCKOUT PROCEDURE	6
HOUR METER	7
ENGINE MAINTENANCE.....	8
LUBRICATION REQUIREMENTS	9
BELT INSTALLATION / REPLACEMENT.....	10
CHIPPER BLADE INSPECTION AND REPLACEMENT	11
MULCHER HAMMER CHECKING AND REPLACEMENT	12
ANVIL INSPECTION AND REPLACEMENT	12
BATTERY SAFETY INSTRUCTIONS.....	14
BATTERY MAINTENANCE	15
3107C TROUBLESHOOTING GUIDE.....	17
SPECIFICATIONS	18
INDEX.....	18

WARRANTY OF BARRETO MANUFACTURING EQUIPMENT

Barreto Manufacturing, Inc. warrants all BARRETO equipment to be free of defects in material and workmanship for a period of one (1) year, dating from the delivery to the original user.

This warranty is in lieu of all other warranties, whether written or implied, and is limited to:

1. Replacement of parts returned to the dealer and/or factory and determined defective upon inspection. (Replacement for parts to dealers shall be at dealer cost plus shipping charges.)
2. Time for pick-up and/or delivery, transportation of service calls by dealers is excluded. Manufacturer reserves the right to determine reasonable time required for repair.

Warranty does not apply to damage caused by abuse or neglect. Time and materials required for normal maintenance and service are also excluded from warranty coverage.

Engines, engine accessories, batteries and tires are warranted by the original manufacturers and are not covered by the Barreto Equipment Warranty.

Wear parts such as chipper blades, mulching hammers, bearings, belts, pulleys, sheaves, bushings etc. are also excluded unless it can be determined that a defect has contributed to premature wear.

SAFETY MESSAGES

This section covers the method used to announce safety messages. Safety messages appear as appropriate in this manual and on decals affixed to the machine where a hazard may occur if procedure or instructions are not followed correctly and completely.



This is the ISO general warning sign it has been adapted for black and white printing.

Standard No.: 7010:2011

It is used in conjunction with the following signal words to communicate a hazard.

From: ISO 3861-2.2004

- **DANGER:** Indicates an imminently hazardous situation which, if not avoided, will result in death or serious injury.
- **WARNING:** Indicates a potentially hazardous situation which, if not avoided, could result in death or serious injury.
- **CAUTION:** Indicates a potentially hazardous situation which, if not avoided, could result in minor or moderate injury.

Study ALL decals on the 3107C before operating the 3107C.

ALWAYS USE COMMON SENSE AND THINK SAFETY FIRST!

Review the **SAFETY INSTRUCTIONS OVERVIEW** found in the operator's manual



Emergency & Medical Contacts:

USA & CANADA: Emergency dial **911**

USA & CANADA: American Association of Poison Control Centers: **1-800-222-1222**

Outside the USA & Canada (Please fill in the appropriate number)

National Emergency number: _____

Poison Control Center: _____


Other: _____

3107C ASSEMBLY INSTRUCTIONS

Upon delivery, check for freight damage and missing items. All hardware necessary to fully assemble is included. There is a pre-shipping inspection sheet and /or a packing slip included, review these to make sure that all components have arrived.

If there is damage or missing components notify the carrier and Barreto Manufacturing immediately.

AT THE TIME OF WRITING, CRATING / SHIPPING METHODS HAVE NOT BEEN FINALIZED. ASSEMBLY INSTRUCTIONS MAY VARY.

 **WARNING:** The 3107C and components are heavy. Lift the 3107C by mechanical means: while lifted support the 3107C with jack stands. Always team lift heavy components: “Lifting loads heavier than about 50 pounds will increase the risk of injury.” (OSHA)

- Install the tongue. Refer to drawing 00708
 - Using a wire puller, pull the provided electrical wire through the top hole in the front of tongue. Depending on crating method, you will either need to attach the vehicle adapter to the wire or connect the light plugs to the lights, follow the zip tie points (two small holes) back to each light and zip tie the wire at each point. Run the wire behind the axle.
 - The tongue installs with 3 bolts and 3 lock nuts. Fit up all 3 bolts and lock nuts before tightening. The lock nuts must go on the battery side.
 - Attach the safety chain with the quick link: the threaded side of the quick link pushes through the slot on the tongue flips around and hooks through the lower hole.
- Install the tires: See drawing 00700.
 - Tighten bolts in a star pattern, final torque 100 lb-ft.
- Check engine oil level, the engine may be drained of gas and oil prior to shipping.
 - See engine operator’s manual for checking / filling instructions.

Refer to your assembly (exploded views) manual for drawings.

3107C INTENDED USE

This machine is designed to chip wood up to 7” in diameter. It should not be used for anything other than wood. Doing so will cause damage to the machine or operator.

OPERATOR TRAINING

Everyone who operates a 3107C or assists the 3107C operator needs to know the following aspects of machine operation before operating the 3107C. They are important and must be a part of operator training.

Rental companies need to understand and be able to explain and demonstrate all of the machine operations to each rental customer including:

- **KNOW AND UNDERSTAND ALL SAFETY POINTS AND CONSIDERATIONS**
- Check that all guards/covers and safety decals are in place
 - If an engine driven component is exposed or accessible, a guard is missing.
- Know how to properly connect the 3107C to a towing vehicle
- Know the towing position of the: swivel jack or stand; chipper hopper and rear flap
- Know the operating position of the: swivel jack or stand, chipper hopper and rear flap
- Understand the 3107C capabilities and intended use
- Know how to start and stop the engine
- Know how to engage and disengage the clutch
- Understand how to prevent clogs
- Know how to safely clear clogs from the chipper

For detailed instructions on 3107C operation see the operator's manual in the canister attached to the chipper hopper.

ROUTINE MAINTENANCE

Routinely check the condition, clean, tighten, repair, or replace as necessary the following:

- | | | |
|-----------------|-------------|------------------|
| • Safety decals | • Fasteners | • Chipper Blades |
| • Muffler guard | • Anvil | • Engine Oil |
| • Fuel lines | • Belts | • Grease Points |


Clean safety decals often using soap and water. **DO NOT** use abrasive cleaners or solvents such as mineral spirits that will damage the decals. Replace any damaged (unreadable) or missing decals. If you replace a machine part that has one or more decals affixed to it, replace the decals also. Replacement parts and decals can be purchased from Barreto Manufacturing, Inc. When attaching decals, the temperature of the mounting surface must be at least 40°F (5°C) and must be clean and dry.


DO NOT pressure wash or hose down any bearing, water can enter the bearing and dramatically reduce bearing life. Wipe away excess grease, dirt and grime that accumulate on or near a bearing.

Service the engine according to the engine owner's manual. Follow the directions for all aspects of service including air filter change, oil level checking, filling, draining, disposal of engine oil, disposal of petrol/gasoline, and off-season long-term storage.

Off-season long-term storage of the 3107C can be at any ambient temperature.

MAINTENANCE PREPARATION

 **WARNING:** The engine, exhaust pipe and engine oil get hot during operation. Allow adequate time for the engine and engine components to cool before beginning maintenance.

 **DANGER:** BEFORE beginning any maintenance on the 3107C that requires a guard be removed or exposes someone to a part that moves during operation, the **3107C lockout procedure** must be followed.


Only trained and qualified personnel should perform maintenance or repairs of the 3107C or the battery.

LOCKOUT PROCEDURE

Manufacturers recommended lockout procedure: To render the 3107C inoperable.


- 1. DISCONNECT THE BATTERY.**
- 2. REMOVE THE KEY.**

1. Disconnect the battery: See: BATTERY SAFETY INSTRUCTIONS first,
Disconnect the negative battery cable where the cable connects to the 3107C chassis prevent the cable from touching any part of the engine or chassis. Then disconnect the negative cable from the battery. Store the cable where only the person performing the maintenance has access to the cable. (When reconnecting, connect the battery first, chassis second)

 **WARNING:** The battery contains sulfuric acid that can cause blindness and severe burns. Avoid contact with eyes, skin and clothing. Read the section: BATTERY SAFETY INSTRUCTIONS, in this manual.

2. Remove the key:

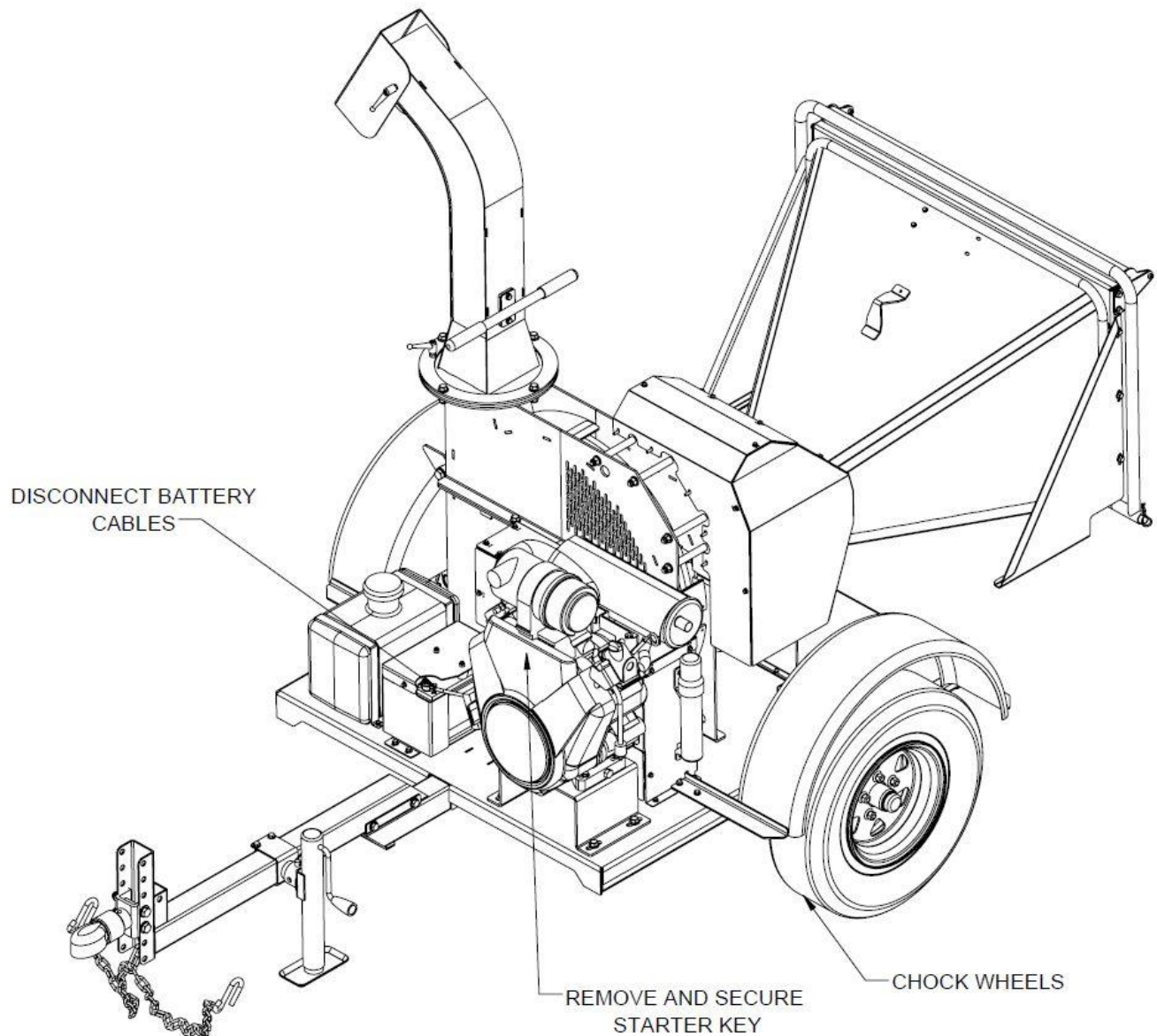
Attempt to start the engine with the key. This should ensure that any residual power in the system is drained. Turn the key to off and remove the key. Store the key where only the person performing the maintenance has access to the key.

 **WARNING:** DO NOT use your fingers, hands or any other body part to turn the chipper disk. The chipper is heavy and has sharp blades.

See figure: TO RENDER THE 3107C INOPERABLE on the next page:

This is a recommended lockout procedure in accordance with OSHA 1910.147(a)(3)(i) it is your responsibility to establish and utilize procedures for affixing appropriate lockout/tagout devices.

For more information on developing vehicle maintenance lockout/tagout procedures refer to OSHA, DIRECTIVE NUMBER: CPL 02-00-147.



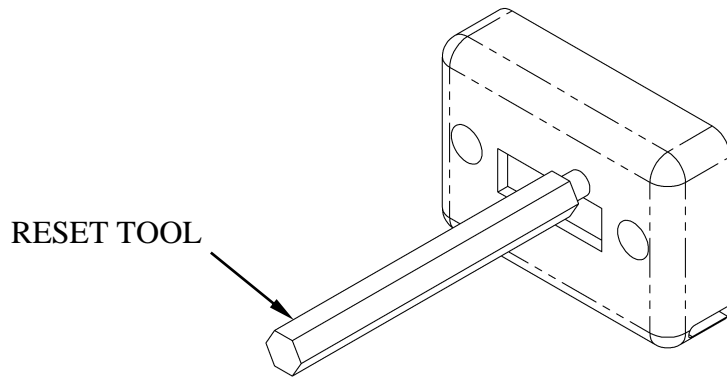
HOUR METER

The **DGI® TACH/HOUR** hour meter tracks the hours of machine operation in order for routine maintenance to be performed on a timely basis.

Your **DGI®** hour meter is pre-set at the **DGI®** factory to go into **Flash Alert** mode at 25-hour intervals. Although the engine manufacturer does not require changing engine oil this often, **due to heavy-duty use and extreme conditions inherent to 3107C use, Barreto Manufacturing strongly recommends frequent oil changes.**

Refer to this manual for equipment service requirements and to the **Engine Manual** for other engine service requirements.

While **Flash Alert** is active, hold the tip of the **RESET TOOL** (Key Kancel Wand) against the meter as shown. Within several seconds the display will stop flashing indicating the Service Interval has been reset. If the wand gets lost, a small mechanic's pick-up magnet will reset the meter.



ENGINE MAINTENANCE

Follow the instructions provided in your engine operator's manual for all engine maintenance and procedures.

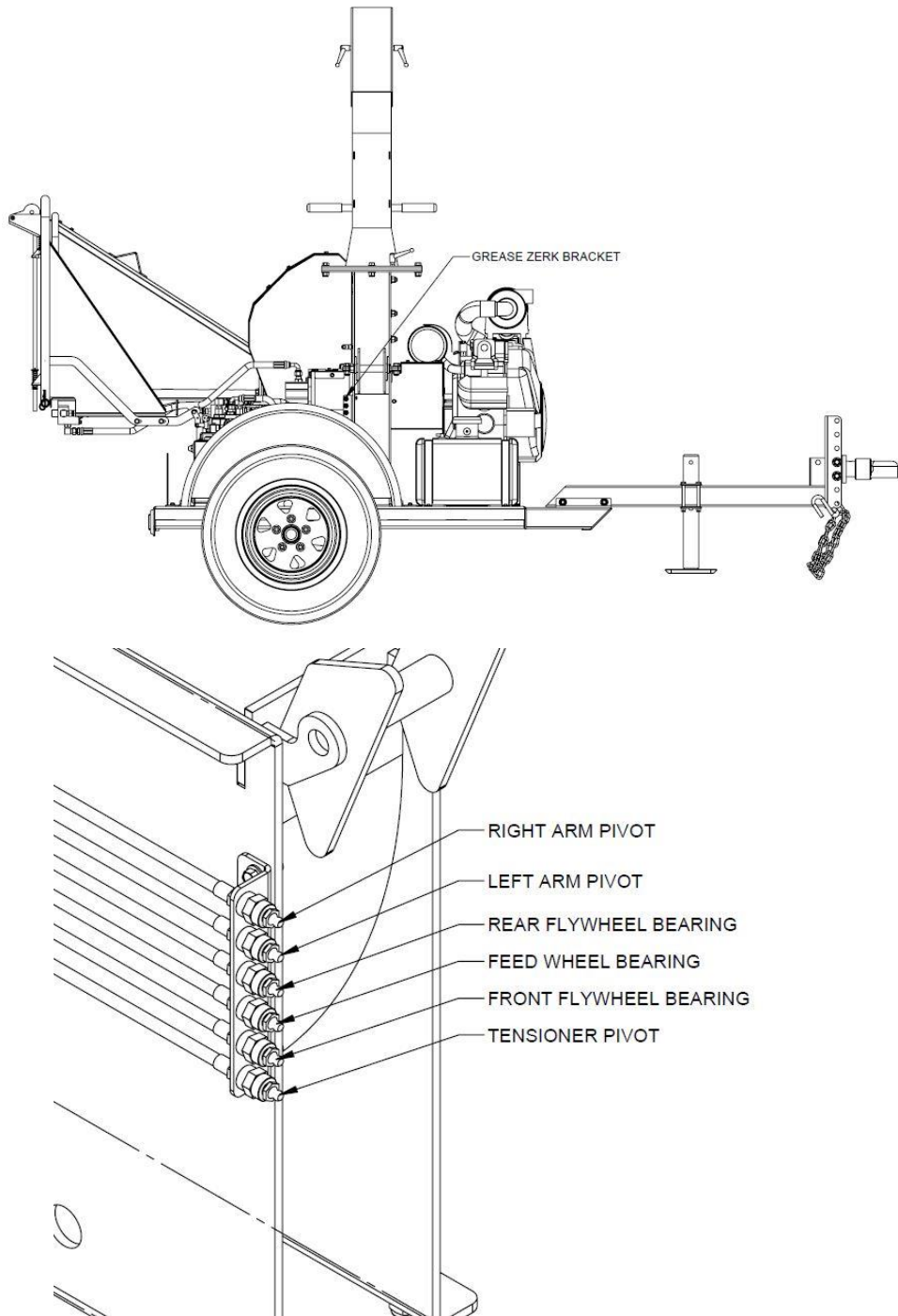
Barreto Manufacturing has added an engine oil drain hose to your engine to facilitate easier oil changes.

Due to heavy duty use inherent to 3107C operation Barreto Manufacturing recommends that you change your engine oil every 25 hours.

LUBRICATION REQUIREMENTS

Grease at the intervals indicated in the following illustration of grease points. Wipe away excess grease, KEEP GREASE OFF OF BELTS.

1. Arm pivots- Weekly or every 25 hours of use
2. Feed wheel bearing- Daily or every 6 hours of use
3. Flywheel bearings- Daily or every 6 hours of use



BELT INSTALLATION / REPLACEMENT

The belts on the 3107C have been designed for heavy duty use, high shock loads and smooth clutching. It is recommended that you replace your belts with belts from Barreto Manufacturing.

NOTE: The following instructions are intended for any 3107C with the updated 00720 or 00720-H engine mount kit. If your unit does not have the updated engine mount assembly, please contact Barreto for the correct parts.



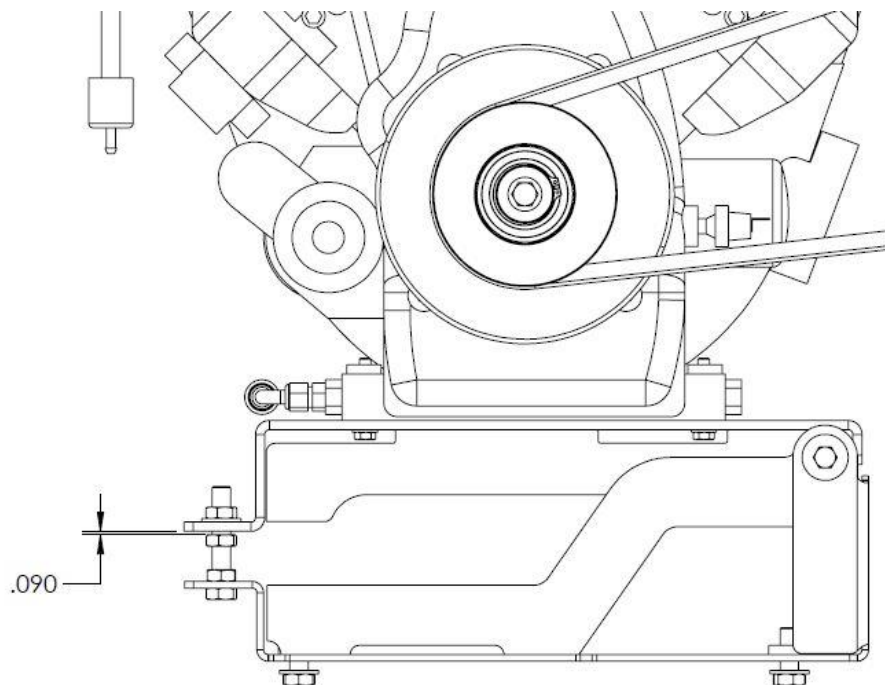
WARNING: The 3107C must be rendered inoperable before removing the belt cover or beginning any work on the belts. See the MAINTENANCE PREPARATION section.

To replace your belts:

1. Remove the belt covers.
2. Loosen the jam nuts holding the upper engine mount in plate
3. Pivot the engine upward to reduce tension and remove belt. Use a wood block or similar item to keep engine propped up.
4. Install new belt and remove block to lower engine into place.
5. Move lower jam nuts to allow a 1/16"-1/8" gap between the engine plate and jam nuts.
6. Tighten upper jam nuts against engine plate and increase tension on belt
7. Check the tension on the belt by using a deflection gauge. The belt should deflect 1/4" under 25lbs of pressure.

Check engine / pulley placement:

Alignment between the drive pulley and the driven pulley is critical for proper clutch function and belt life. Use a straight edge to make sure that the drive and driven pulleys are aligned.



Check belt tension: To quickly check the tension on the belt, loosen the upper jam nuts on the engine mount. If the engine rises 1/16”-1/8” off the lower jam nuts, the belt is at approximately the correct tension. If the engine does not lift slightly, lower the bottom jam nuts to set the gap and tighten the upper jam nuts tight.

CHIPPER BLADE INSPECTION AND REPLACEMENT

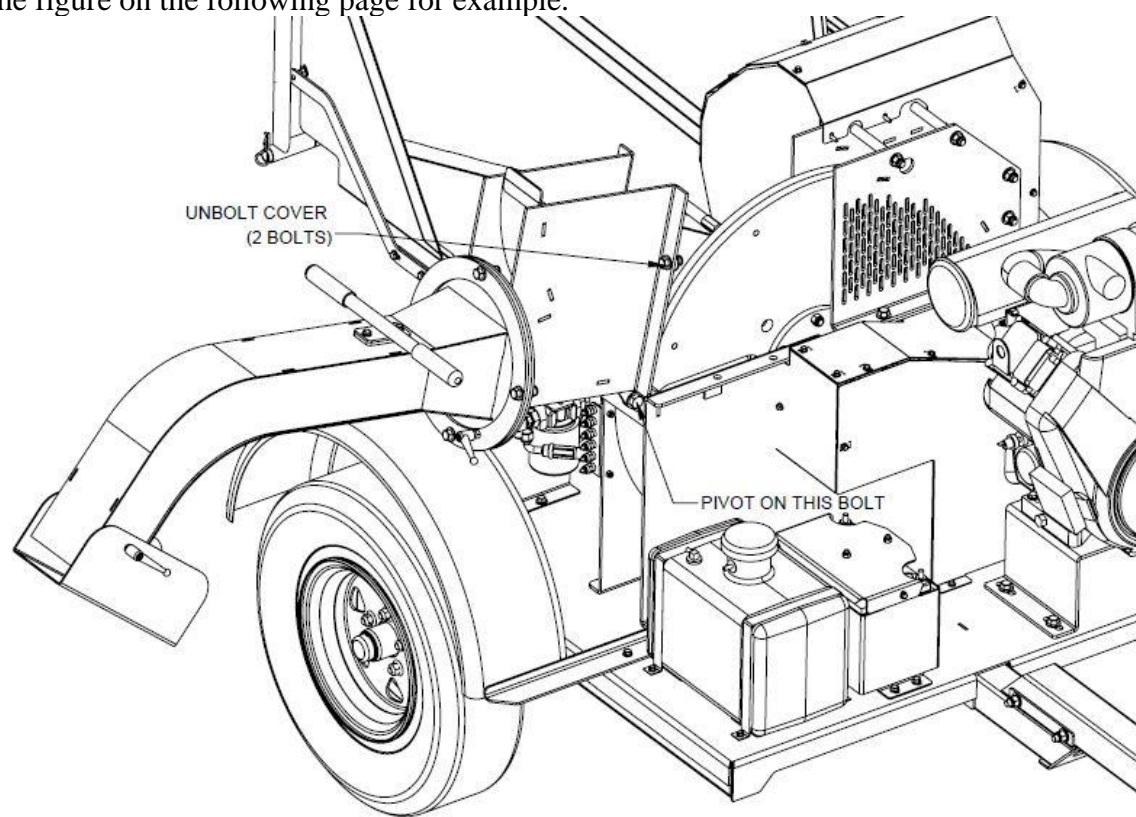
! **WARNING:** The 3107C must be rendered inoperable before removing the chipper blade access cover. See the MAINTENANCE PREPARATION section.

! **WARNING:** Never turn the chipper disk with your hand or any other body part as serious injury may occur.

! **CAUTION:** Avoid touching the chipper blades. The chipper blades are extremely sharp and may cut any body part that comes in contact.

To inspect chipper blades:

Unbolt the exit spout assembly and hinge outward to rest on the angled rests. Stay clear of the blades, unlock and turn the chipper disk as necessary to position the chipper blade in the blade access area. See the figure on the following page for example.



To replace chipper blades:

The chipper blades have two cutting edges, when the first edge has dulled the blades can be reversed and the new cutting edge used. When both edges have dulled the blades may be sharpened or replaced.

The bolts holding the chipper blade were installed with high strength (red) threadlocker. If you cannot get a bolt to loosen apply heat, such as from a heat gun, while applying torque to remove the bolt.


When reinstalling the chipper blade use high strength red threadlocker and torque bolts to 102 lb-ft.

NOTICE: DO NOT drop bolts or tools into the chipper disk area; it will be difficult to remove.

Blade sharpening information:

The blades should only be sharpened by a professional with a professional precision knife grinder. Both sides of both blades must be sharpened at the same time. To keep the blades at the same weight there must be less than 0.010" difference in the blade profile. Uneven sharpening or wear will lead to excessive vibration while operating.

ANVIL INSPECTION AND REPLACEMENT

 **WARNING:** The 3107C must be rendered inoperable before removing the chipper hopper. See the MAINTENANCE PREPARATION section.

Detailed anvil inspection:

Remove the anvil gauge cover on the left side of the flywheel cover. This will allow access to the anvil.

If the anvil has two worn edges, is damaged, has chunks missing or cracks, it must be replaced.

As the anvil edge wears, as long as the anvil is not damaged, the anvil may be moved to correctly re-align the anvil. See instructions below.

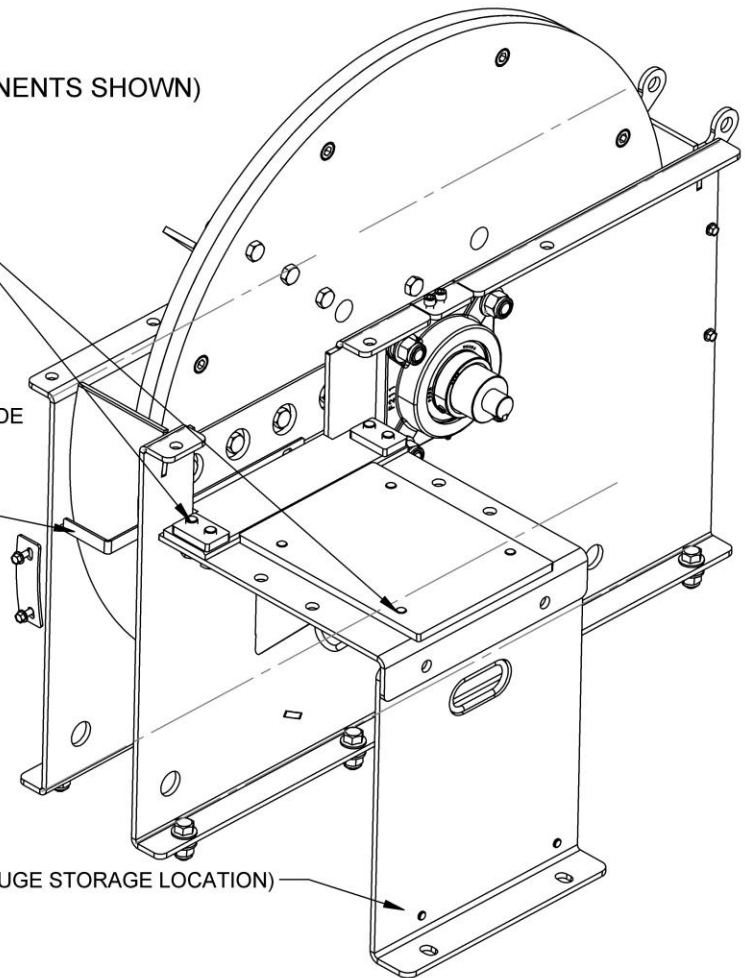
Anvil alignment / placement:

The anvil must be correctly aligned with the chipper blade for the chipper to work correctly.

Rotate the chipper disk so that a blade is next to the anvil. The anvil should be 0.060" (1.5mm) to 0.100" (2.54mm) max away from the blade. Use the supplied anvil gauge, mounted underneath the feed chute to measure and adjust the anvil as shown in the figure below. Some parts are hidden to better show the procedure. Removal of the hidden parts is not necessary.

(ONLY CRITICAL COMPONENTS SHOWN)

1. LOOSEN (DO NOT REMOVE) THE (4) BOLTS FOR THE ANVIL AND THE (4) BOLTS FOR THE BACKING PLATE FROM UNDERNEATH
2. REMOVE ANVIL GAUGE COVER
3. ANVIL GAUGE FROM STORED LOCATION AND INSERT BETWEEN BLADE AND ANVIL. SLIDE ANVIL AND BACKING PLATE BACK TO SANDWICH THE GAUGE BETWEEN ANVIL AND BLADE (DISTANCE BETWEEN ANVIL AND BLADE SHOULD BE ABOUT 0.10")
4. TIGHTEN ALL BOLTS: 94LB-FT FOR 1/2" BOLTS, 62LB-FT FOR 7/16" BOLTS
5. REPLACE ANVIL GAUGE AND COVER BACK TO THEIR LOCATIONS



(ANVIL GAUGE STORAGE LOCATION)

WARNING: Exercise extreme caution while measuring the gap between the chipper blade and the anvil. Wear gloves and all appropriate personal protective equipment.

Replace the anvil gauge cover and attach the anvil gauge to the bracket below the feed chute after procedure. Anvil gauge cover **MUST** be in place prior to machine use.

HYDRAULIC OIL SYSTEM

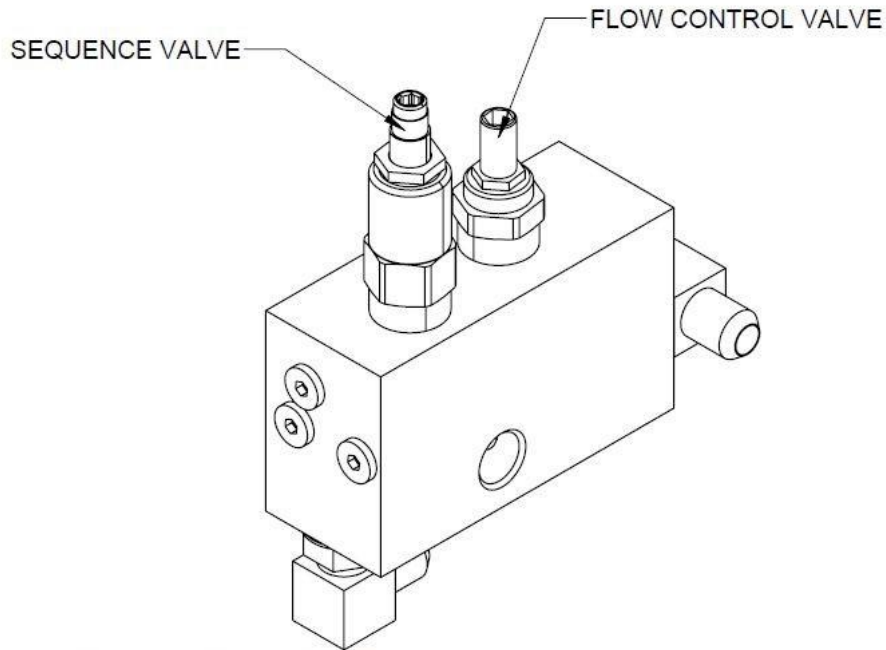
The 3107C hydraulic system uses ISO 68 hydraulic oil for the feed wheel pump and motor. The oil level should always read in the middle or top of the hydraulic tank sight glass. Never run the 3107C if the hydraulic oil is not visible in the sight glass. The oil and filter should be changed every 200 hours.

The hydraulic control system uses a set of flow control and pressure sequencing valves to adjust the feed wheel speed. If the chipper flywheel slows down, the system will cut off flow to the feed motor to allow the flywheel to regain full speed. This system is set from the factory but may need to be adjusted slightly depending on conditions. The flow control valve is set from the factory to almost full flow. This can be checked by loosening the jam nut on the flow control valve and turning the screw clockwise. The screw should be set to ½-turn back from the full clockwise stop.

SEQUENCE VALVE SETTING

If your machine is equipped with the sequence valve control system, use the following instructions. If the feed wheel is not turning when the lever is engaged, the sequence valve needs to be adjusted. Loosen the jam nut on the sequence valve and use an allen wrench to adjust the valve. Turn the allen screw counter-clockwise in 1/8-turn increments until the wheel turns, it should be an obvious on/off setting. Once the wheel starts turning, lock the jam nut at that setting.

If the feed wheel is too aggressive and does not allow the flywheel to regain speed, adjust the screw by turning the allen screw clockwise until the wheel stops turning, then back counter-clockwise until it turns again. Lock the jam nut at this setting.



BATTERY SAFETY INSTRUCTIONS

Only trained and qualified personnel should perform maintenance or repairs of the 3107C or the battery.



WARNING: The battery contains sulfuric acid that can cause blindness and severe burns. Avoid contact with eyes, skin and clothing.



WARNING: Battery fumes are flammable and explosive. Avoid exposing the battery to sparks and flames. Sparks can be created near the battery when handling battery cables or jumper cables.



WARNING: The battery, posts, terminals, and related accessories contain lead and lead compounds, chemicals known to the State of California to cause cancer and reproductive harm.



WARNING: Wear appropriate personal protective equipment when handling the battery. Shield entire face, especially your eyes, wear rubber gloves and a rubber apron to reduce the risk of acid burns. Battery caps must be tightly in place if the battery has removable caps.

First Aid Measures from Material Safety Data Sheet, for sulfuric acid: ScienceLab.com

- **Eye Contact:** Check for and remove contact lenses. Immediately flush eyes with plenty of water for at least 15 minutes. Cold water may be used. Get medical attention immediately.
- **Skin Contact:** Immediately flush skin with plenty of water for 15 minutes while removing contaminated clothing and shoes. Cover irritated skin with an emollient. Cold water may be used. Wash clothing before reuse. Thoroughly clean shoes before reuse. Get medical attention immediately.
- **Serious Skin Contact:** Wash with a disinfectant soap and cover the contaminated skin with an anti-bacterial cream. Seek immediate medical attention.
- **Inhalation:** If inhaled, remove to fresh air. If not breathing give artificial respiration. If breathing is difficult, give oxygen. Get medical attention immediately.
- **Serious Inhalation:** Evacuate the victim to a safe area as soon as possible. Loosen tight clothing such as a collar, tie, belt, or waistband. If breathing is difficult, administer oxygen. If the victim is not breathing, perform mouth-to-mouth resuscitation. Seek immediate medical attention



WARNING: It may be hazardous to the person providing aid to give mouth-to-mouth resuscitation when the inhaled material is toxic, infectious or corrosive.

- **Ingestion:** DO NOT induce vomiting unless directed to do so by medical personnel. Never give anything by mouth to an unconscious person. Loosen tight clothing such as a collar, tie, belt or waistband. Get medical attention if symptoms appear
- **Serious ingestion:** Not available

Emergency & Medical Contacts:

USA & CANADA: Emergency dial **911**

USA & CANADA: American Association of Poison Control Centers: **1-800-222-1222**

Outside the USA & Canada (Please fill in the appropriate number)

National Emergency number: _____

Poison Control Center: _____

Other: _____

BATTERY MAINTENANCE



WARNING: Read the section: **BATTERY SAFETY INSTRUCTIONS**, before handling the battery.

The original Interstate Batteries equipped on the 3107C are considered to be maintenance free. However some maintenance will help your battery last longer. Temperatures below freezing or over 90°F (32°C) will reduce the life of your battery. If the 3107C is not going to be used for a season, store it fully charged in an area where the temperature will stay between freezing and 90°F (32°C). This will help prolong your battery life.

NOTICE: The battery acid is corrosive and can damage your machine. Keep the battery clean and avoid getting battery acid on your machine.

Always recycle / dispose of your old batteries properly. Most places that sell automotive batteries will take your old battery and pay you for it. DO NOT dump your battery. DO NOT put your battery in a dumpster.

Always replace any damaged battery or battery components, such as wires, clamps, lugs, fasteners, isolators, covers, etc.

To remove your battery: Engine must be off. All engine switches must be in the OFF position.

- Disconnect the ground cable at the 3107C chassis and position it to not touch any 3107C component.
- Disconnect the ground cable at the battery and set it aside.
- Disconnect the positive cable from the battery; the cable may remain connected to starter motor.
- Remove the battery from the 3107C. Place on a clean, dry, level, non-conductive surface. Keep away from flames, sparks and heat sources.
- DO NOT store where the ambient temperature is less than freezing or hotter than 90°F (32° C).

To install your battery: Engine must be off. All engine switches must be in the OFF position.

- Place battery in battery compartment.
- Connect the positive cable to the battery and the starter motor.
- Make sure that the ground cable is not touching any 3107C component.
- Connect the ground cable to the battery.
- Install the battery isolator and cover.
- Connect the ground cable to the 3107C chassis.

To clean your battery: information from www.interstatebatteries.com

- Disconnect your battery. See: **To remove your battery:** the battery may remain in the 3107C.
- Make sure vents caps are pressed securely into battery.
- Clean terminals and lugs with a mixture of baking soda and water. A wire brush may be used.
- Clean 3107C components near the battery with baking soda and water. DO NOT use a wire brush.
- Rinse with clean water and allow enough time for water to dry.
- Coat terminals and wire lugs with dielectric grease.
- Connect your battery. See: **To install your battery:**

To check the electrolyte level and add water: Information from www.interstatebatteries.com

It is particularly important to check electrolyte levels during hot weather.

- Pry removable vent caps off with a flat head screw driver. You will see individual vent wells.
- Carefully look into each individual cell to make sure that the water is covering the lead plates.
- Add **distilled water** to any cells that are low on water. DO NOT OVER FILL, add water slowly, add just enough water to cover the lead plates or to a fill line indicator if equipped.
- Re-install removable vent caps; make sure that they are fitted all the way in place.



DANGER: Keep your eye away from the battery while looking into a battery cell. Stay a safe distance back and use a flash light. Serious injury including blindness will occur.



WARNING: Wear appropriate personal protective equipment when handling the battery. Shield entire face, especially your eyes, wear rubber gloves and a rubber apron to reduce the risk of acid burns. Battery caps must be tightly in place if the battery has removable caps.

NOTICE: Only use distilled water, available at most grocery stores. Tap water and other drinking water have impurities that will damage your battery.

To recharge the battery:

Read, understand and follow all safety and operating instructions from your battery charger. Make sure that your battery charger is rated appropriately to charge the battery. If voltage and amperage can be adjusted on your charger, make sure they are adjusted correctly to your battery. **DO NOT** over charge your battery. Interstate Batteries recommend using a 3-stage automatic 12 volt/10 amp charger for automotive batteries such as the MT-34 battery, no Interstate Batteries charger type recommendation has been found for lawn and garden batteries such as the SP-35 battery.

3107C TROUBLESHOOTING GUIDE

At Barreto Manufacturing we take pride in our machines and our customer service. If you are having difficulty with your machine please call us at the number listed on the front page of this manual.



WARNING: Always use extreme care when troubleshooting or making adjustments. Stay clear of all moving parts or parts capable of moving while the engine is running or capable of running. The 3107C must be rendered inoperable before removing any cover. See the MAINTENANCE PREPARATION section.

Also review: 3107C OPERATORS TROUBLESHOOTING GUIDE, in the Operator's Manual.

The 3107C stalls as soon as anything is fed into either hopper.

Rotor stops, engine remains running:

The belts are too loose or worn out, replace worn out belts.
Check engine / pulley placement and belt tension.
See: section BELT INSTALLATION /REPLACEMENT

Rotor and engine stop / stall:

Make sure the engine is running at full throttle before feeding material.
Check your engine Operator's manual and make sure the engine is up to date on all maintenance.
Old oil, dirty filters and obstructed air intakes will reduce engine performance.
Make sure that you are using fresh gasoline. Gasoline has a shelf life of about 90 days.
Check that all grease points have been greased and that bearings are in good condition.
Check that there is nothing impeding the rotors movement.

The 3107C vibrates excessively:

If the vibration is coming out of the engine: See engine Operator's manual, contact engine dealer.
Make sure that the engine is up to date on all maintenance.

If the vibration is coming from other 3107C components:

Check the chipper disk, make sure that all looks to be in good repair and that nothing is stuck to it.

The chipping blades dulled unreasonably fast:

It is more likely that the Anvil has moved and is not in the correct position.

See section: ANVIL INSPECTION AND REPLACEMENT

If non-plant material has been fed into the chipper the blades will dull fast and may be damaged.

SPECIFICATIONS

MODEL NUMBERS **3107C**

DIMENSIONS (APPROXIMATE, STORAGE POSITION)

GVWR: 1900 lbs. (863 kg)
Height: 89" (2.26m)
Length: 128" (3.17m)
Width: 69" (1.75m)

ENGINE

Engine: Vanguard™ 31.0 Gross Hp
Fuel: Gasoline, Carbureted
Power: 31hp (22.8 kW) at 3600 RPM
Fuel Capacity: 5 U.S. Gallons (18.9 liters) External tank
Engine Oil Capacity: 2.43 U.S. Quarts (2.3 liters)
Electric Start: Standard
Hour Meter: Standard

INDEX

ASSEMBLY INSTRUCTIONS, 4
BATTERY MAINTENANCE, 15, 16
CHIPPER ANVIL, 12, 13, 17
CHIPPER BLADES, 5, 11, 12, 13
DECALS, 3, 5
HOUR METER, 7
INTENDED USE, 4
LUBRICATION, GREASE, 5, 9, 16, 17
LUBRICATION, OIL, 4, 5, 6, 7, 8, 17
MAINTENANCE, 2, 5, 6, 7, 8, 14, 15, 17
OPERATOR TRAINING, 5
SPECIFICATIONS, 18
TROUBLE SHOOTING, 17
WARRANTY, 2